

WP2 (Arbeidspakke 2)

Bærekraftig mobilitet som et integrert system (modellering og planlegging)

Sustainable mobility as an integrated system (modeling and planning)

Fagdag

1st Sept 2023

MOST



Trøndelag fylkeskommune
Trööndelagen fylhkentjielte



NTNU

Norwegian University of
Science and Technology

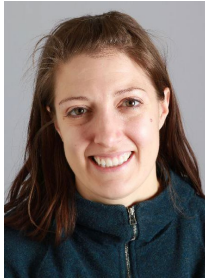
Who we are:



Trude Tørset
(IBM, Professor)



Yngve Frøyen
(IAP, Professor)



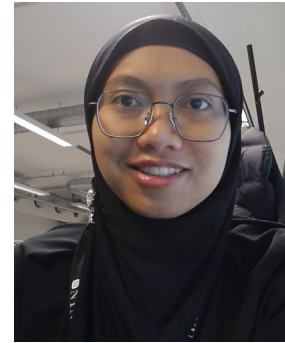
Kelly Pitera
(IBM, NTNU & OsloMet, Professor)



Tsaqif Wisnadi
(IAP, PhD student)



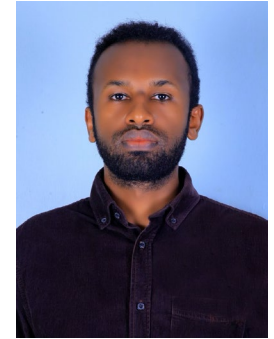
Freyja Brandel-Tanis
(Fullbright recipient for 2022-23,
term completed)



Zakiya Pramestri
(IBM, PhD student)



Eline Hernes
(IBM, Student researcher)



Zalalem Birhanu
(IBM, PhD student)



Dipanjan (Dip) Nag
(IBM, Post-doc)

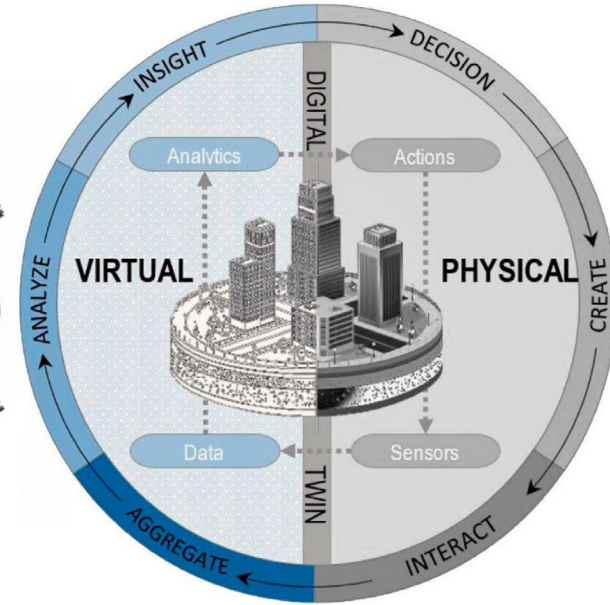
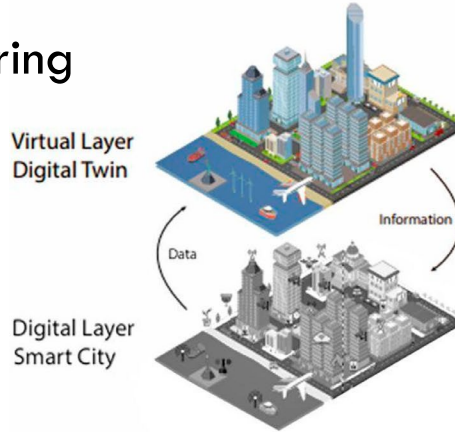
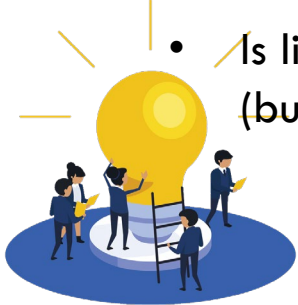
We focus on the Transport system:

- Planning tools
 - “Who?": commuters, people
 - “Where?": movement in the city
 - “What?": current situation vs. future years
 - “Why?": commuter behaviour to a change in the system
 - Transport model: Calculate transport demand(trips) based on land use characteristics and transport services. Also helps us understand travel behaviour
- Are Digital Twins (DT) the next generation of planning tools?



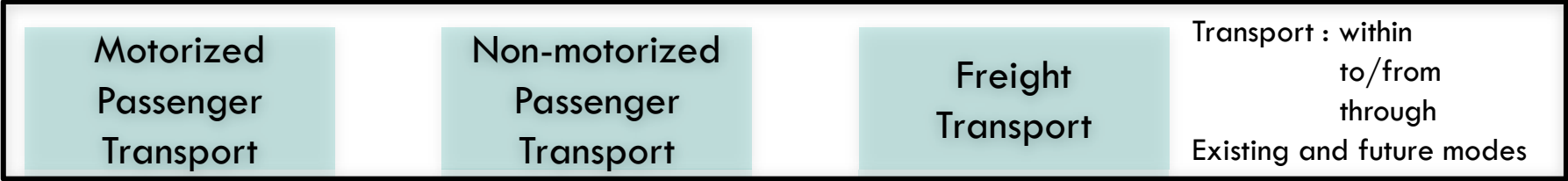
Mobility DT:

- DT comes from the manufacturing field
- DT for City → Mobility
 - Can communicate well
 - Capture many elements simultaneously
 - Many sources of data (ICT, IoT, etc.)
 - Is linked to other infrastructure (buildings, pipelines etc.)



Source: <https://doi.org/10.3390/su14106263>

- Help us in:
 - Testing scenarios
 - Providing reliable predictions



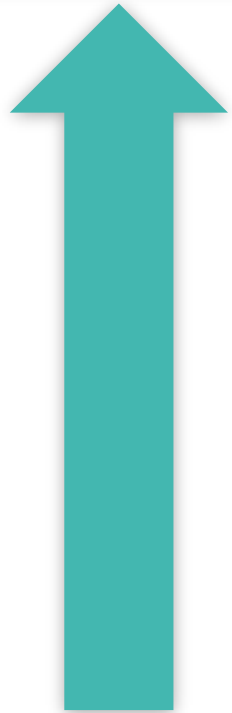
Evaluation of digital twins for mobility **decision making** (1. how do the decision makers understand/use the tool? 2. how is it scalable, managed, how is the data gathered/used?)

Scenario assessment for Elgeseter (determining possible innovative solutions, testing the digital twin to assess solutions)

Digital Twin Development (incorporating current (static and dynamic) modelled data with the modelled built environment)

Transport model development (tool that predicts future flows of traffic due to new measures)

Understanding the current situation: **knowledge-based** mapping and assessment (what is the mobility “problem”?)



Measuring Impact of Sustainable Transport Initiatives on Interactions of Multimodal Road Users

Simulation-based Modelling with Empirical Data considering Digital Twins



Zakiya Aryana
Pramestri

Research objectives:

- Analyzing mobility pattern to understand travel behavior across modes
- Transportation model of all modes including freight and active transport
- Simulations to measure the potential impact of transport initiatives
- Testing for developing an efficient and communicative DT platform



Source: Norconsult in https://miljopakken.no/wp-content/uploads/2013/01/20190220-alternativsvurdering_elgeseter.pdf

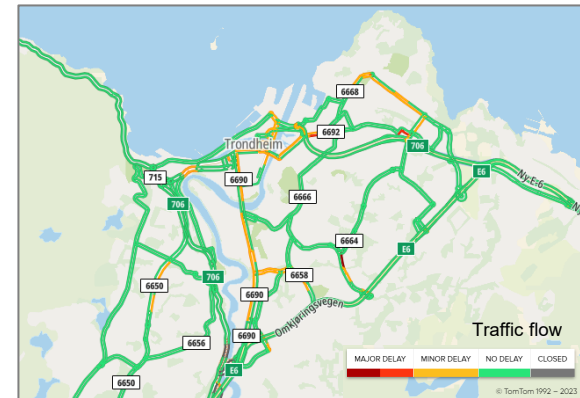
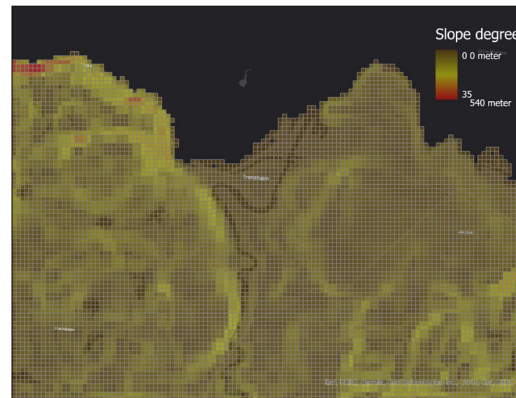
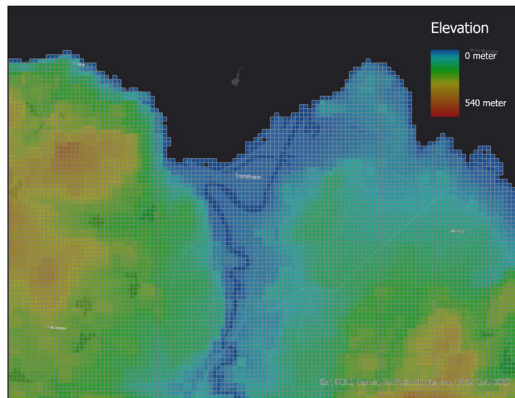
The effect of three-dimensional geographical characteristics on the demand dynamics of urban transportation modalities



M. Tsaqif
Wismadi

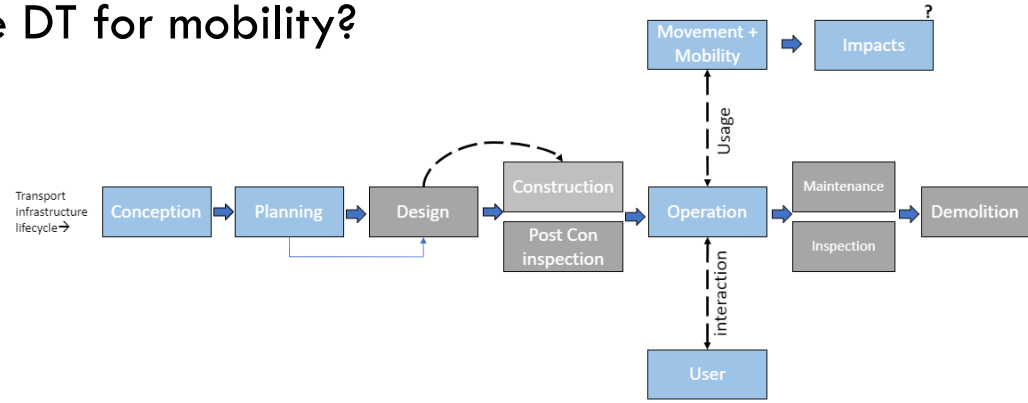
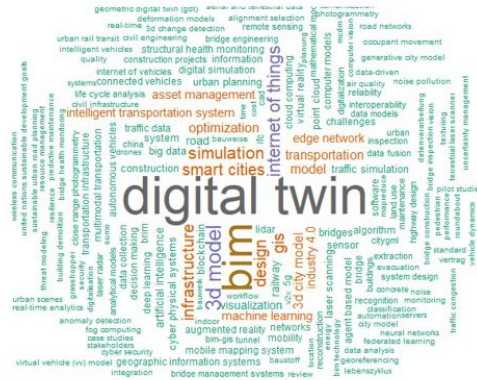
Research objectives:

- Effects of 3D attributes (slope, topography, etc.) on demand
- Leverages remote sensing technology and government databases
- Incorporates 3D attribute evaluation for transportation systems → Output



Systematic Literature Review – Digital Twins within Mobility

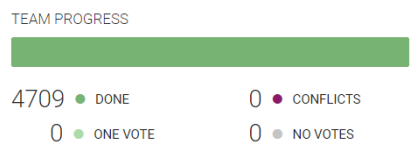
- To understand how Mobility DT is defined in Literature
- How do stakeholders use DT for mobility?



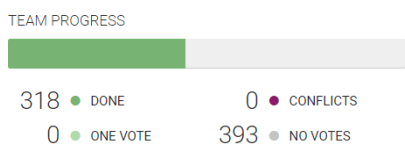
Method for urban
construction
Asset 1
Pedestrian
Rail infra
Review

DT data enviro/mgmt
DT Infrastructure
Method for transport
DT visualization theory
DT related to urban/city but bordering on transport
DT system/case study
decision makers/users

^ Title and abstract screening



^ Full text review



We have a few research activities

- Activity #1 → **Co-defining Digital Twin functions for Sustainable Transportation: What can it be used for?**
- Activity #2 → “What activities do you generally use a **planning tool** for? (focus on Mobility and Planning)”

Takk for at dere kom!

Smart Travel Survey 2023:
Expression of Interest

