

Citizen Empowerment : Platform for Active Mobility Solutions

PhD Candidate- IBM

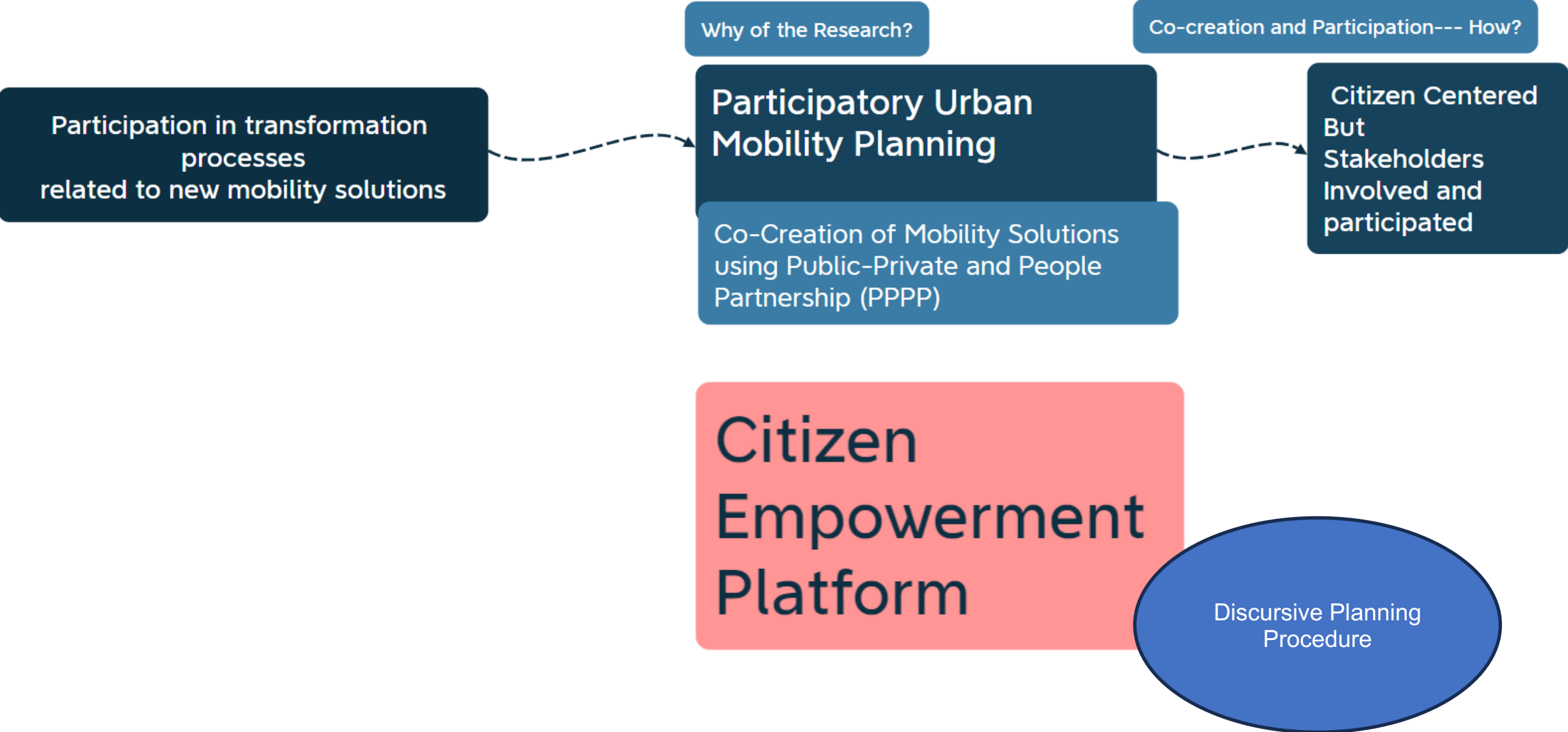


MoST – Mobilitets lab Stor-Trondheim

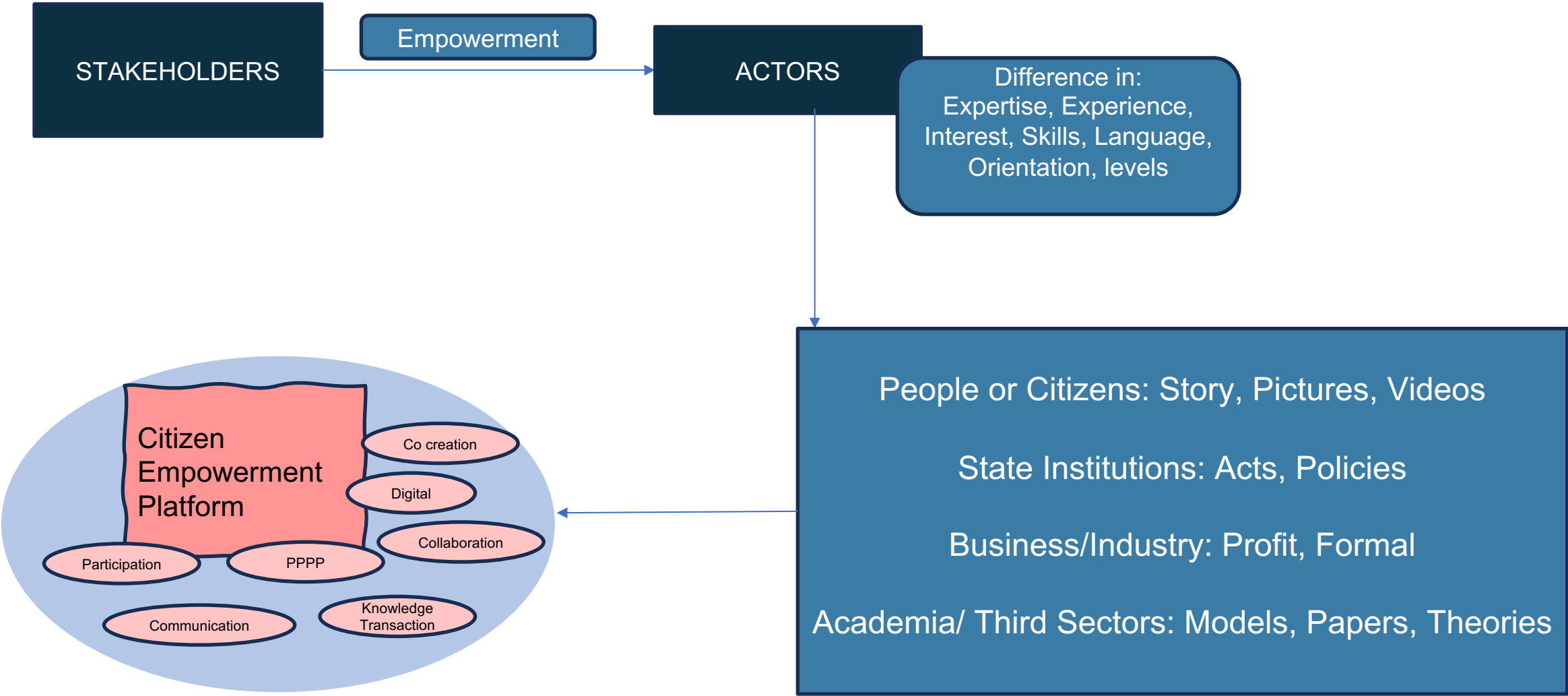
Aashish Adhikari

December, 2023

The Research



Working On: Framework/Conceptual model for Collaboration



Progress- Ursa Major Summer School/ Courses

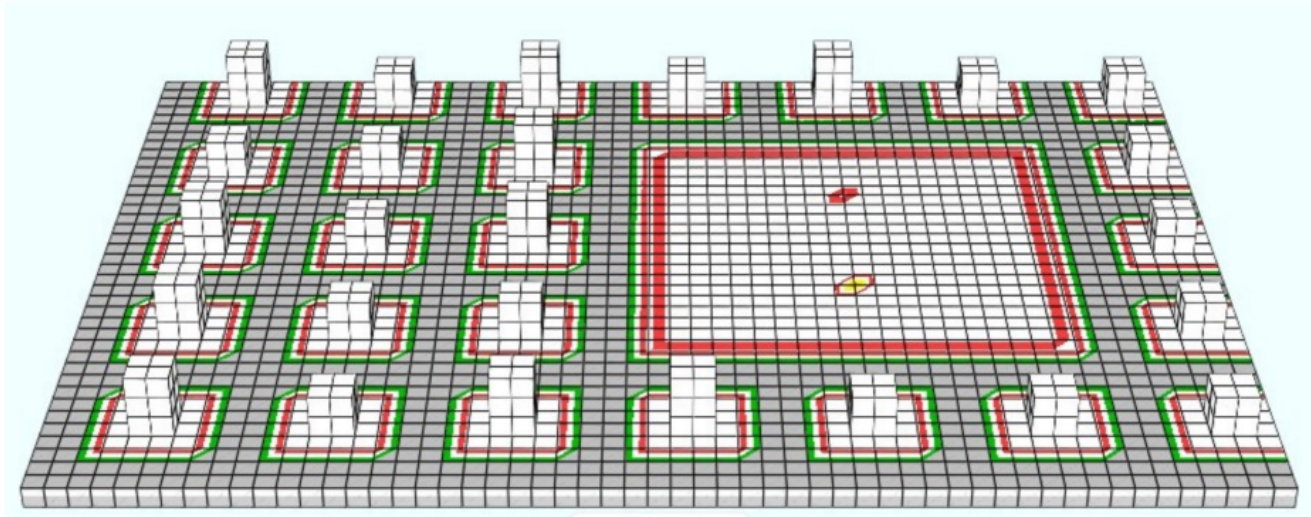
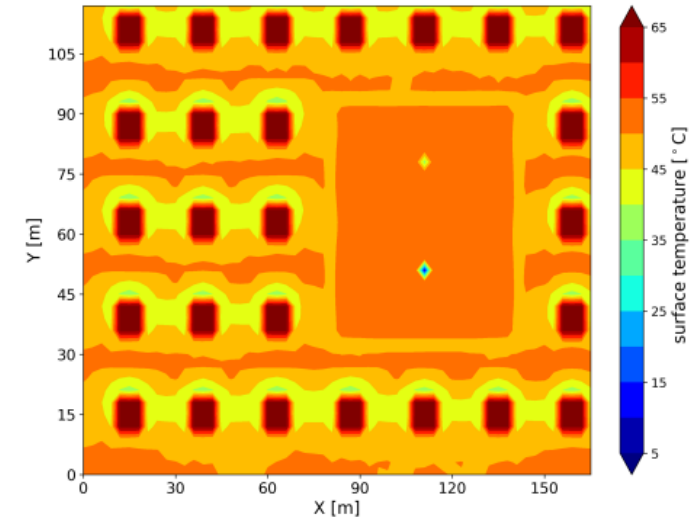
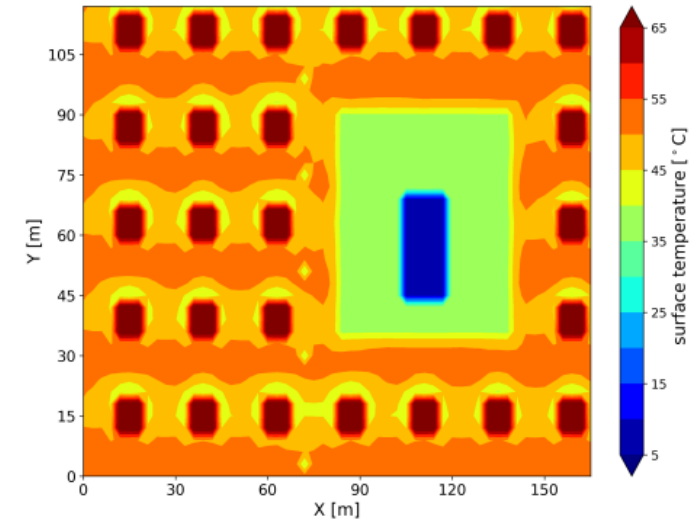


Figure 1. The base case domain including 26 buildings and a central square with a tree and a pond.

Participatory Modeling
Collective Visioning



(a) *Base*



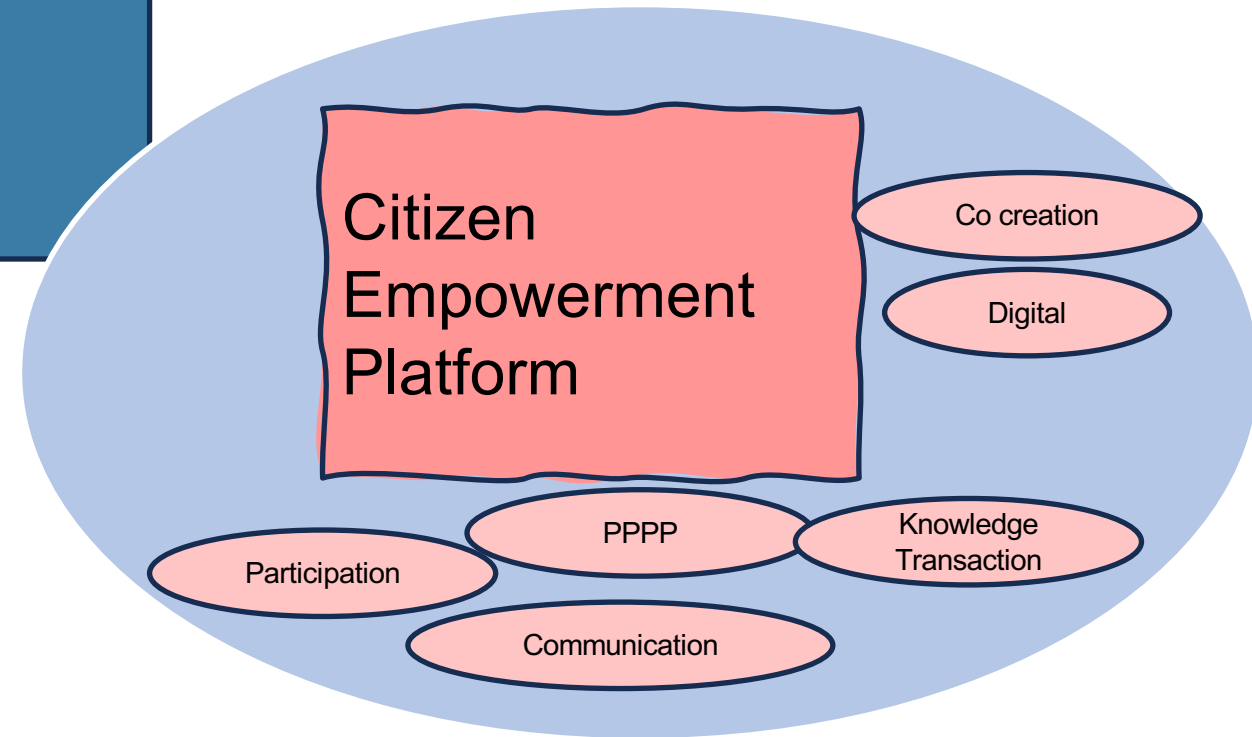
(b) *Final*

Figure 11. 1.5m temperature average over the entire simulation time. Figure (a) shows the *base case*, while figure (b) shows the *final case*.

Works to follow through

Citizen Centered Tool

- What works best for Citizens? What tools?
- Exploring digital technology enabled behavioral changes
- Advancement in Citizen Involved Participatory Modeling?



Thank You